



Small craft - Owner's manual
(ISO 10240:2004)

Owner's manual

Assembly manual and operating instructions



XCAT BASIC

Table of contents

1	Introduction and important notes	4
1.1	XCAT model options	4
1.2	Safety instructions (for all XCAT models)	4
1.3	Important notes for driving with motor	6
1.4	Important notes on transport and storage	7
1.5	Environmental protection	8
1.6	Instruction style guide	9
1.7	Further information	9
2	XCAT Basic	10
2.1	Components of the basic version	11
2.2	Assembly and disassembly of the XCAT Basic boat.....	12
3	Accessories	21
4	Transportation and maintenance	25
4.1	Packing the bags	25
4.2	Car roof transport	28
4.3	Setting the clamping force on the crossbeam	29
4.4	Disassembling the flanges in the hull	31
5	Technical data	33
5.1	Weight and dimensions.....	33
5.2	Height and draft	34
5.3	Drive type and sail area	34
5.4	Builder's plate and identification number.....	35
5.5	Declaration of conformity	37

1 Introduction and important notes

This manual is intended to familiarize you with your XCAT and to help you operate your XCAT safely.

In addition to the description of the XCAT Basic and other accessories, it also contains information on the safe handling/operation of the XCAT.

Please keep this manual in a safe place and hand it over to the new owner when you sell the XCAT.

1.1 XCAT model options

The XCAT is a multi-sport catamaran where you are not limited to one discipline. The basis for all model options is the XCAT Basic. On this basis you can upgrade your XCAT with additional options. All model options of the XCAT can be combined with each other. For example, you can add the RowVista forward rudder system to the XCAT Sail. No matter which options you choose, they are all designed to be easily mounted on the XCAT without tools and to be quickly ready for use.

The description of the XCAT Sail model option and the RowVista and RowMotion model options can be found in their own supplementary manuals. There is also a separate manual for eProp outboard motor.

1.2 Safety instructions (for all XCAT models)

Carefully read the following safety instructions and all warnings and notes in this manual before starting up your XCAT.

 **WARNING**

Whether on land or water, STAY AWAY FROM POWER LINES! Contact with power lines can result in serious injury or death.

Inform yourself about the legal regulations of the country or region in which you are commissioning the XCAT.

Make sure that the expected wind and sea conditions correspond to design category C (nearshore waters) and that you and, if applicable, your crew are capable of handling the XCAT in these conditions. Any watercraft, no matter how strongly built, can suffer serious damage from improper handling. This is not compatible with safe boating. Therefore, always adjust the speed and direction of travel of your XCAT to the sea conditions. Take weather reports seriously and be aware of wind conditions, local currents and tides. Be

responsible. Do not overestimate your abilities at sea and do not neglect safety regulations. Never use the XCAT while you or your passengers are under the influence of alcohol, drugs or medication. Protect yourself from the sun in hot weather and take plenty of water to drink.

Before operating the XCAT, check all components for possible damage. Always pull the forestay completely tight when sailing to prevent the bowsprit from coming loose from its mount. Do not let line or other objects hang away from the boat while sailing - there is a risk of getting caught on bushes or rocks. Avoid unnecessary grounding. Never drag the boat over rocks.

Avoid the risk of injury by making sure that all passengers have legs and arms on the boat before docking and casting off. Learn to handle the boat in a variety of situations. Give your passengers an introduction to how to handle the boat so they can leave control of the boat to another passenger in case of an emergency. Inform a person on shore of the destination and planned return.

The maximum recommended payload of **240 kg** and the recommended number of maximum **3 persons** must not be exceeded. Regardless of the number of people on board, the total weight of people and equipment must never exceed the recommended maximum payload. Loading must always be done carefully, distributing the loads appropriately to maintain the design trim.

Protect yourself and, if necessary, your crew by wearing appropriate life jackets/ buoyancy aids and cold weather protective clothing. Take into account that in some countries there are legal requirements to wear buoyancy aids that comply with national rules at all times. If you are sailing the XCAT alone and unattended in waters whose shore you cannot reach by swimming, you should, if necessary, connect yourself to the XCAT with a suitable rubber line (e.g. 6 m long and 5 mm thick). Do not sail alone below 10° Celsius water temperature!

Do not use a fixed line to attach yourself to the XCAT. There is a DANGER OF LIFE if the boat capsizes!

Observe the traffic regulations: You always participate in water traffic with your XCAT, even if you use it for your recreational pleasure. Water traffic is regulated by ordinances, which differ according to the area of application. Machine-driven vehicles (motorboats, personal watercraft) are required to give way to sailing vessels. Muscle-powered vehicles without their own boat drive (paddlers, pedal boats, rowing boats) are required to give way to sailing vessels. So always check which XCAT model option you are currently using and who you are obligated to yield to. But forcing right of way is forbidden! Therefore, give way yourself in time with the "Last Minute Maneuver". Commercial shipping always has the right of way! In the inland and coastal area, it is generally valid that vehicles of the professional navigation have the right of way. This includes in particular: Ferries, work vehicles, police and rescue services, fishing vessels with deployed nets. So keep your distance and avoid them!

When on the water with the XCAT, always carry an alternate emergency propulsion system, such as a paddle, oar system, or outboard motor.

1.3 Important notes for driving with motor

Observe the legal regulations of the country or region in which you are operating the XCAT (registration requirement, driver's license requirement, etc.).

Do not use a motor that exceeds the motor power specified in the operating instructions.

Do not smoke on the boat.

Make sure that the tank level is sufficient and that there is enough oil.

For electric outboards, check that the battery is fully charged before each use.

Secure the motor to the boat (by line or chain).

Be on the lookout for others near the beach and drive only in designated driving areas.

1.4 Important notes on transport and storage

Secure the XCAT during transport, e.g. on the roof of the car, using suitable fastening material, e.g. the XCAT transport kit.

Check the tensioning straps regularly and retighten them if necessary.

Observe the instructions in the manuals for your vehicle and the roof rack system, particularly with regard to maximum roof loads and maximum speeds.

If you store the hulls on the car roof for a long time, loosen the tension straps so that the hulls do not warp permanently.

Also, when storing the hulls in other rooms such as garage, basement, etc., do not fix the hulls with tension belts.

Do not use tensioning straps with ratchet, as there is a risk that the hulls will be damaged by excessive tensioning. Therefore, only use tensioning straps with a simple clamping lock.

If the hulls are colder than the center and side beams after transport, assembly may be difficult because the distances no longer match due to different expansion coefficients. In this case, store all parts at the same temperature for some time before assembly.

Clean the boat after each use. Free it from salt residues or stones to prevent possible damage.

Always rinse all parts with fresh water after use in salt water.

A plastic polishing compound can be used to polish the hulls for heavier dirt.

Always store the hulls with the keel upwards so that water does not permanently run into the flanges.

Do not store the hulls permanently in the sun on one side, otherwise they may warp.

Do not store the hulls in the sun under a cover. This can cause heat buildup and warping of the hulls.

Do not store the outboard seats, masthead-float or fender permanently in the blazing sun, as they are not completely UV-resistant. Dismantle the outboard seats after sailing and store them in the shade or cover them (also recommended against dirt and especially bird droppings).

Always maintain your XCAT properly and take into account the wear and tear that occurs over time due to frequent use or improper use.

Row&Sail GmbH cannot be held responsible for changes that it has not agreed to.

1.5 Environmental protection



As water sports enthusiasts, we feel the effects of environmental pollution firsthand. The feeling of diving into a chemically contaminated muddy broth during take-off and landing above a capsized can thoroughly spoil the fun of water sports. Just as we expect clean water and a biologically intact environment for our recreational sports, we should strive to keep the environmental impact of operating the XCAT as low as possible.

The hull skin of the XCAT is made of HD-PE. A weather-resistant, impact-resistant and dirt-repellent plastic that is easy to clean. Even attached shells are easy to remove. The hulls, filled with EPP particle foam, are extremely impact resistant, unsinkable and almost indestructible. And yet, because of the foam core, very light and stable. HD-PE and EPP are both very environmentally friendly and easy to recycle.

With the XCAT model options, you are always environmentally friendly on the way.

1.6 Instruction style guide

This manual uses different style elements to convey different types of information.

Style element	Meaning
Bold	Information that needs to stand out
1) ... 2) ...	Instructions that you need to follow step by step in the given sequence.
<u>Info:</u>	The keyword Info indicates information that requires your special attention.
<u>Note:</u>	The keyword Note indicates information on how to prevent damage to property.
 CAUTION	The keyword CAUTION indicates dangerous situations that can result in injuries.
 WARNING	The keyword WARNING indicates generally dangerous situations that could result in death or serious injury.

1.7 Further information

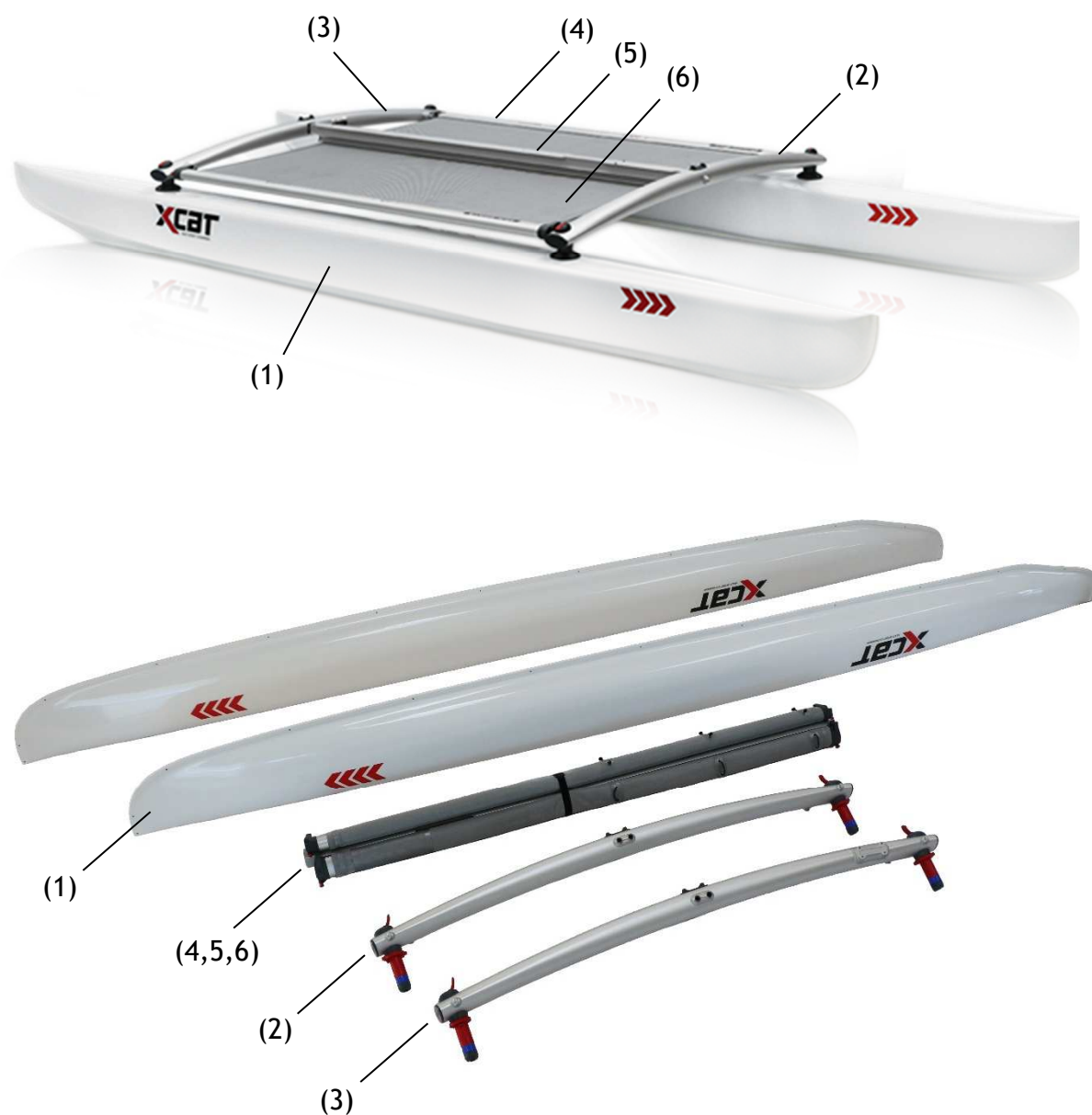
For more information on the XCAT model options, accessories and numerous videos on setting up, dismantling and operating the XCAT, visit:

www.x-cat.com

2 XCAT Basic

The XCAT is a multi-sport catamaran where you are not limited to one discipline. The basis for all model options is always the XCAT Basic. The XCAT Basic consists of only five parts. None of its individual parts weighs more than 17.5 kg. The hulls, filled with EPP particle foam, are extremely shock-resistant, unsinkable and almost indestructible. The XCAT can be assembled and disassembled by only one person. All parts of the XCAT are designed and thought out so that you do not need any tools for assembly and disassembly.

2.1 Components of the basic version



The basic version consists of:

- two hulls (1)
- front crossbar (2)
- rear crossbar (with bracket for an optional motor board) (3)
- a central part - consisting of side beams (4), Center beam (5) and trampoline (6)

2.2 Assembly and disassembly of the XCAT Basic boat

Build up XCAT Basic

- 1) Insert the front crossbeam (without motor bracket) into the front flanges of the two hulls. The center pin must point toward the center of the boat. The clamping levers must be open.

Info: To prevent the hulls from tipping over, you can place the hulls in the launching cradles/trolley (both available as accessories) during assembly and disassembly.



- 2) Place the rear crossbar in the rear area of the XCAT so that it is ready to hand.
- 3) Push the center beam with the reinforced end in the direction of travel onto the front crossbeam. Do not release the center beam.



reinforced end



4) Put the rear crossbar on the center beam and ...

5) ... put it into the hulls.



6) Turn the red rotary lock until the pin overlaps with the opening hole.

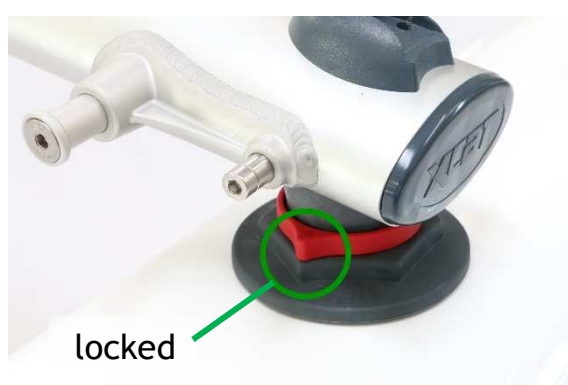
7) Push the crossbar down completely ...



8) ... and fix it with the rotary lock.



Info:
 If the boat is not on a flat ground, it may cause the rotary lock to be sluggish.
 Solution: put something under the hulls so that they are parallel.



9) Close the clamping lever.

Info:

Carry out steps 6) to 9) at all four corner points



10) Hold the side beam which is beside the center beam and loosen the Velcro.



11) First unroll the side beam rolled up on the side, ...



12)... put on the bolts ...



- 13)... and fold over until it snaps into place.

Note: the locking bolts must always be smooth-running and engage by themselves due to the spring force.



- 14) Check whether the front locking bolt is engaged. The unlocking clip must not be jammed under the mushroom knob. Otherwise, push the unlocking clip down.



- 15) Then unroll the top side beam, ...



- 16)... put on the bolts ...



- 17)... and fold over until it also snaps into place.

Note: the locking bolts must always be smooth-running and engage by themselves due to the spring force.



- 18) Check whether the front locking bolt is engaged. The unlocking clip must not be jammed under the retention pin. Otherwise, push the unlocking clip down.



- 19) Fasten Velcro around one of the crossbars.



Dismantle XCAT Basic

- 1) For both side beams, pull out the front locking bolt and slide the unlocking clip under the mushroom knob. This keeps the locking bolt unlocked.



- 2) Unlock the locking bolt at the rear and turn the side beam upwards.



- 3) Roll up the side beam to the top ...



- 4) ... and place it on the center beam.



- 5) On the other side, unlock the rear locking bolt and unhook the side beam, then roll up downward, ...



- 6) ... put it on the side of the middle beam, fix it with the knee and fasten it with the Velcro.



- 7) Open all four clamping levers of the crossbars.



- 8) To unlock, turn all four rotary locks counterclockwise.



- 9) Raise rear crossbeam evenly, pull it out of the hulls and ...



- 10) ... pull it off from the center beam.

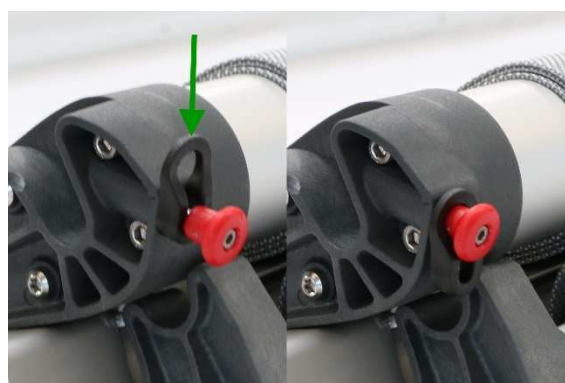
Put the crossbar aside, do not release the center bar during this time.



- 11) Pull off the center section from the front crossbeam.



Note: The two front locking bolts can be unlocked again with the unlocking clips. This reduces the risk of transport damage.



- 12) Pull front crossbar out of one hull first and lay the hull aside.

Note: Hold the hull firmly so that it does not fall over.







- 13) Then pull crossbeam from the other hull.

Note: Hold the hull firmly so that it does not fall over.



3 Accessories

	<p>eProp Outboarder # 085 804</p> <p>ePropulsion Vaquita adapted for XCAT Sail,</p> <p>Range 8km, Travel time 70 minutes (full throttle) Range 20km, Travel time 5 hours (half throttle)</p> <p>incl. battery, remote control, battery holder, velcro strap for battery mounting, charger, 1 bag for charger and battery, 1 bag for eProp outboard motor</p>
	<p>XCAT roof rack accessories for Thule Wingbar # 980 810</p> <p>Designed specifically for Thule Wingbar.</p> <p>2x PUR hull cushions + washable cover, 4x PUR belt cushions, connection unit, 2 straps 25 mm (1") - 2.9 m (114"), 2 straps 18 mm (0.75") - 1.25 m (50").</p>
	<p>XCAT roof rack accessories T-slot # 980 807</p> <p>Suitable for Thule Aerobar, VW and other brands.</p> <p>2x support profiles, 4x PUR belt cushions, connection unit, 2 straps 25 mm (1") - 2.9 m (114"), 2 straps 18 mm (0.75") - 1.25 m (50").</p>
	<p>XCAT PUR belt cushions for roof racks (4 pcs) # 980 811</p>

	<p>Bow net „Sail“ # 980 427</p> <p>For stowing luggage.</p>	
	<p>Hiking seats # 980 432</p> <p>With mounting for sculls or SUP paddle modular and incl. bag - mounted on the side beam (1 pair).</p>	
	<p>Foot straps # 980 433</p> <p>For hiking (1 pair).</p>	
	<p>Masthead float # 980 415</p> <p>2 float sections, fixing strap to mount to the sail-top.</p>	
	<p>Tiller-Fix # 980 440</p> <p>Easy stabilization of the tiller. Can be adjusted precisely. Ideal for Stand Up Paddling and sailing single-handed.</p>	
	<p>Launching cradles # 980 416</p> <p>2 units, each with 2 pneumatic tires, \varnothing 260 mm (8"), 85 mm (3.35") wide.</p>	
	<p>Launching trolley # 980 421</p> <p>With full-width axle, telescopic rod (135 (53") - 240 cm (95")) and 2 pneumatic tires, \varnothing 400 mm (15.75"), 100 mm (4") wide.</p>	

	<p>Upgrade launching trolley to beach wheels</p> <p>(ø 420 mm (16"), 200 mm (8") wide)</p>	<p># 980 808</p>
	<p>Additional seat on the center beam</p> <p>With sturdy mounting and synthetic jaws. Trimming the weight and it's comfortable for the passenger.</p>	<p># 980 434</p>
	<p>Motor mount for rear crossbeam</p> <p>Combinable with rudder.</p>	<p># 085 403</p>
	<p>Carbon SUP Paddle 3-parts / Emergency paddle</p> <p>Adjustable paddle (180 to 220 cm or 71" to 87") with carbon shaft for Stand Up Paddling</p>	<p># 980 048</p>
	<p>Strap black</p> <p>25 mm x 2.9 m</p> <p>18 mm x 1.25 m</p>	<p># 980 407</p> <p># 980 408</p>
	<p>Velcro strap</p> <p>For securing different parts.</p> <p>25 x 300 mm (1" x 12")</p> <p>30 x 550 mm (1.18" x 21.5")</p> <p>30 x 750 mm (1.18" x 29.5")</p>	<p># 980 016</p> <p># 980 017</p> <p># 980 070</p>
	<p>Stainless steel anchor</p> <p>Incl. 15 m (50') line and softshell bag.</p>	<p># 980 405</p>

	<p>Clamping block Basic mounting for accessories. Is fitted to the side beam.</p>	<p># 980 428 # 980 438</p>
	<p>Fender Can be attached to the side beam.</p>	<p># 980 401</p>
	<p>Life jacket S: chest measurement 80 - 90 cm M: chest measurement 90 - 100 cm L: chest measurement 100 - 110 cm</p>	<p># 980 609 # 980 610 # 980 611</p>
	<p>Dry Bag 18 L Waterproof bag for mounting on rowing boards. With additional shoulder belts for use as backpack. Volume: 18 litres, Size: 45 x 30 x 15 cm (16" x 12" x 6")</p>	<p># 980 083</p>
	<p>Dry Bag 30 L Red robust rugged TPU bag. Good overview and access from the center. Volume: 30 liters, Size: 50 x 50 x 13 cm (19" x 19" x 5")</p>	<p># 980 018</p>
	<p>Rowing Gear Bag Bag 40 x 37 x 28 cm (15.75" x 15" x 11") for sliding seat, foot strecher, stopper or other accessories, included with RowVista® and RowMotion®.</p>	<p># 980 007</p>

You can find more information about accessories on the Internet at:

www.x-cat.com.

4 Transportation and maintenance

Note: Always transport, store and maintain your XCAT properly and watch out for wear and tear that occurs over time from frequent use or improper use. Any watercraft, no matter how strongly built, can suffer serious damage from improper handling. Secure the XCAT during transport, e.g. on the roof of a car, using suitable fastening material, e.g. the XCAT transport kit.

4.1 Packing the bags

Pack the Crossbeam Wheel Bag

- 1) Open the bag completely and fold up the inner flap.



- 2) Put the first crossbar in and wrap the flap over it.



- 3) Place the second crossbar in the pocket.

Info:

If using a motor board, insert it now so that the motor board is on top.



- 4) Put the rudder in and slide it under the crossbar.



- 5) Place the bowsprit on the rudder.



- 6) Now put accessories like bow net, paddle or capsize righting line on it or stow it in the net pocket inside the lid.



If necessary, there may also be space for the bag with the sails.

- 7) Now the wheelbag can be closed.



- 8) Small parts such as mainsheet, clamping unit, flange wrench, etc. can be stowed in the two compartments on the outside of the lid.



Packing the Trampolines / Mast Bag

The rolled up trampoline on one side, top and bottom of the mast on the other side of the bag. Between them is the separation of the bag.



Packing the bag for main sail and genoa

Push the furled mainsail and the furled genoa together into the bag.



Packing the Rowing Gear Bag

With the RowVista or RowMotion rowing options, the following parts can be packed into the Rowing Gear Bag:

- Sliding seat
- Foot stretcher
- 2 Clamping rowlocks
- Stopper



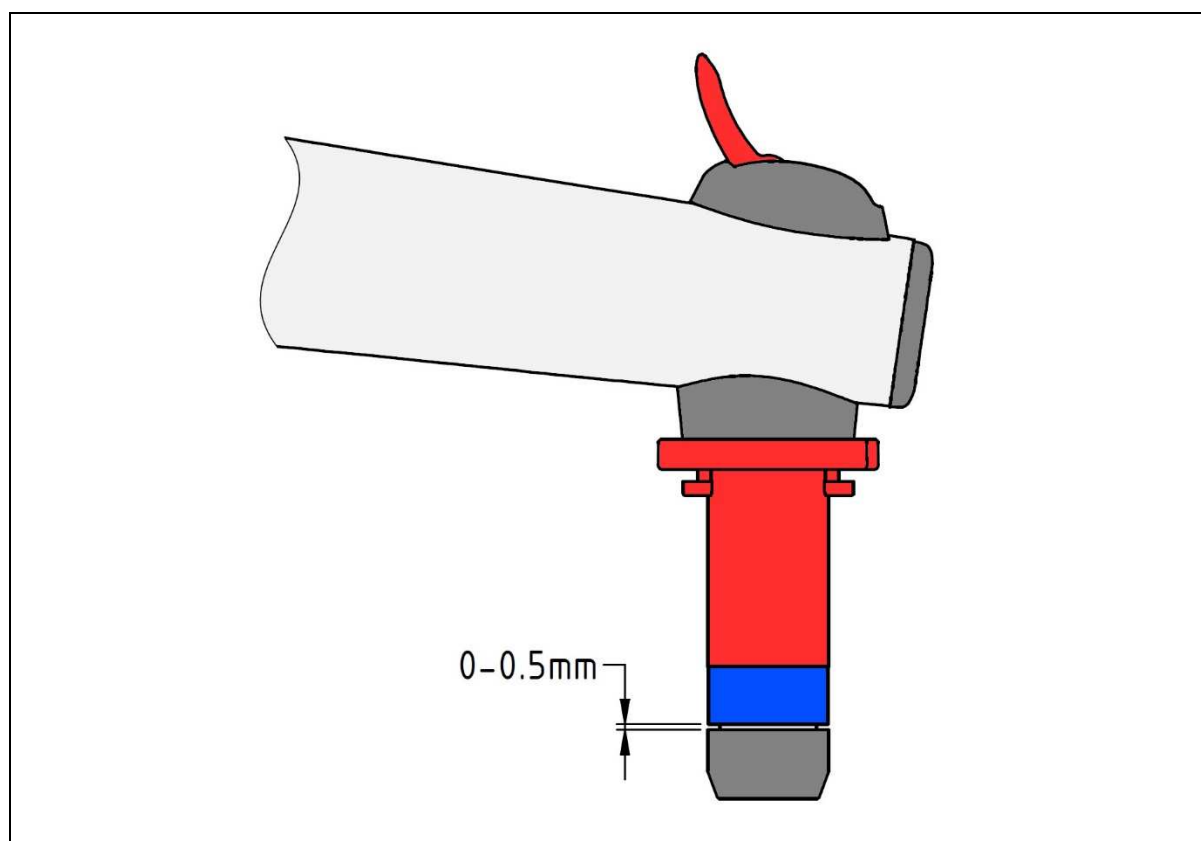
4.2 Car roof transport

To transport the XCAT, you don't need a boat trailer or a special roof rack. All you need are a few parts for your roof rack that make transporting the XCAT on your car roof safe and fast. The XCAT Roof Rack Set includes everything you need to safely transport the XCAT on a standard roof rack.



4.3 Setting the clamping force on the crossbeam

With the clamping lever open, set a gap of 0 mm to max. 0.5 mm according to the sketch. The clamping ring must not be clamped in this position. The red locking sleeve and the blue clamping ring must still be able to rotate easily.



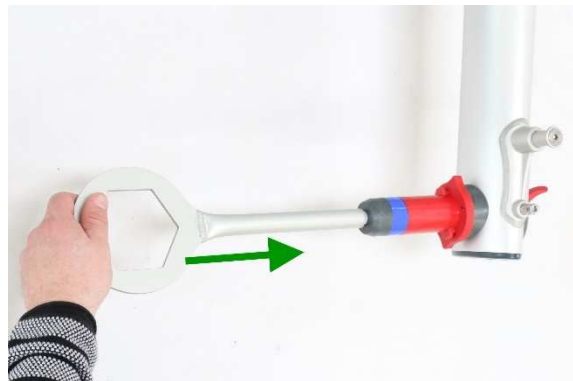
Info: Regularly grease the friction surface of the clamping levers with lubricating grease (e.g. Vaseline) to keep them running smoothly.

Readjust the clamping lever

- 1) The nut for adjusting the clamping force is located at the bottom of the crossbeam.

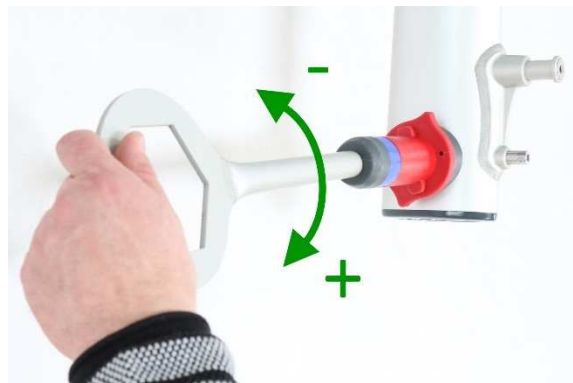


- 2) Put the supplied flange wrench on the nut ...



- 3) ... and turn clockwise or counterclockwise to adjust the clamping force.

Turning clockwise increases the clamping force; turning counterclockwise decreases it.



4.4 Disassembling the flanges in the hull

If there is water in the hulls, you can remove the flanges to open the hulls.

Note: Do not leave the hulls open for a longer period of time! Only remove the flanges to get any water that may have penetrated the hulls out and then immediately reinstall the flanges.

Remove flange

- 1) Apply supplied flange wrench and turn counterclockwise.



- 2) Pull flange out of hull and drain hull with opening facing down.



Install flange

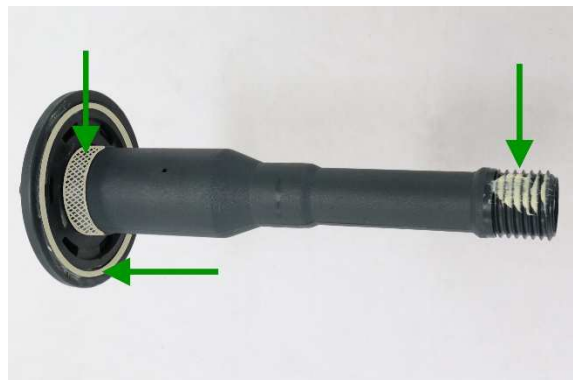
- 1) Carefully pull the sealing off the flange ...



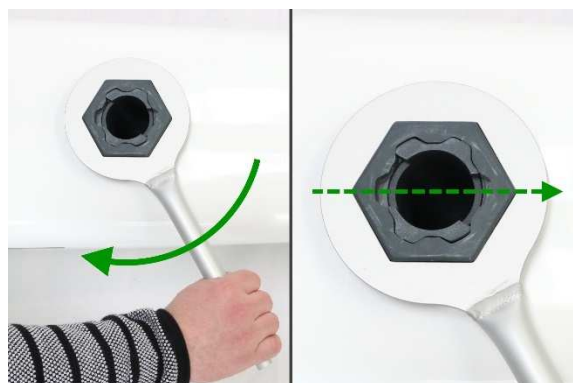
- 2) ... and place on the opening in the hull.



- 3) Before inserting the flange, grease the points shown in the pictures with grease (e.g. Vaseline).



- 4) Insert the flange into the hull and tighten clockwise with the flange wrench. Align flange in direction of travel as shown in photo.



5 Technical data

Model name: XCAT rowing and sailing catamaran

Design Category: C (Coastal Waters)

Info: A watercraft assigned to design category C is designed for voyages in nearshore waters, large bays, estuaries, lakes and rivers where weather conditions with wind force up to and including 6 Beaufort and wave heights up to and including 2 m may occur.

5.1 Weight and dimensions

<p>XCAT Basic:</p>	<p>55 kg (all parts)</p> <p>Hulls 17.5 each</p> <p>Crossbar 2.5 kg each</p> <p>Middle part 15 kg</p> <p>Length: 5.0 m</p> <p>Width: 2.08 m</p> <p>Height: 0.55 m</p> <p>Hull: 0.265 m x 0.395 m</p> <p>Trampoline: 2.15 m x 1.85 m</p>
<p>XCAT Sail:</p>	<p>20 kg (all parts)</p> <p>Mast length: 4.5 m (2-part)</p>
<p>XCAT RowVista:</p>	<p>14.5 kg (all parts)</p> <p>(Forward rowing scull 4.5 kg each)</p>
<p>XCAT RowMotion:</p>	<p>10 kg (all parts)</p>
<p>Maximum recommended payload:</p>	<p>240 kg</p>
<p>This value includes person weight of maximum 3 persons, as well as the provisions, all items for personal use and any equipment that is not included in the mass of light displacement.</p>	

Do not exceed the maximum recommended number of people.

Regardless of the number of people on board, the total weight of people and equipment must never exceed the recommended maximum payload. Loading must always be done carefully, distributing the loads appropriately to maintain the design trim.

Weight fully loaded:	325 kg
Sum of: XCAT Basic (55 kg), Sail model option (17 kg), RowVista/RowMotion (max.13 kg), and maximum recommended payload.	

5.2 Height and draft

Maximum height (bridge clearance) with mast in place for XCAT Sail:	5.1 m
Maximum draft with full load:	0.2 m

5.3 Drive type and sail area

Main drive type:	Rowing or sailing
Sail area XCAT Sail:	8.4 m ² Mainsail: 5.2 m ² Genoa: 3.2 m ²
Optional drive type:	Outboard motor up to maximum 2.5 kW
Achievable speeds:	Stand-up paddling (SUP): approx. 6-9 km/h Sailing: 1-2 Bft. approx. 10 km/h 2-3 Bft. approx. 20 km/h 4-5 Bft. approx. 28 km/h Rowing: approx. 8-10 km/h

5.4 Builder's plate and identification number

The builder's plate is located on both crossbars.



The identification number is located on the rear side of the hull after the flange.



5.5 Declaration of conformity

**Declaration of conformity for recreational craft
in terms of design and construction
in accordance with directive 2013/53/EU**

Name of the boat manufacturer:	Row&Sail GmbH Gewerbezeile 9 4040 Lichtenberg/Linz Austria
Module used for design and construction:	A
Identification number: (please enter)	AT - XCT -
Model code:	XCAT
Type of boat:	Rowing boat and sailing boat
Type of hull:	Multihull
Main type of propulsion:	Oars/sculls/sails or outboard motor with up to max. 2.5 kW
Building material:	Aluminum, plastic and carbon
Maximum payload:	240 kg (This value includes the weight of no more than 3 people plus provisions, all personal belongings and any equipment that is not included in the mass of light displacement.)
Design category:	C
Hull length	Lh: 5.00 m
Width	Bh: 2.08 m
Draught	T: 0.15 m

This declaration of conformity is issued as the sole responsibility of the manufacturer.

I hereby declare on behalf of the manufacturer that the vessel described above meets all the specified requirements.

Name und position: Ing. Jochum Bierma
Managing Director

Signature: 

Place, Date: Lichtenberg/Linz, 08.05.2023

Safety requirements according to annexes I.A & I.C of directive.

Applicable ISO standards:

Small craft - Principal data:	EN ISO 8666: 2002 *
Small craft - Identification code - CIN:	EN ISO 10087: 2006 *
Small craft - Builder's plate:	EN ISO 14945: 2004
Small craft - Owner's manual:	EN ISO 10240: 2004
Small craft - Stability and freeboard:	EN ISO 12217-3: 2009
Small craft - Buoyancy:	EN ISO 12217-3: 2009
Small craft - Maximum load capacity:	EN ISO 14946: 2005

Version: May 2023

Keywords

Accessories 21
Bags 25
Basic 10
 build up 12
 components 11
 dismantle 17
Basic option see Basic
Bridge clearance 34
Builder's plate 35
Car roof transport 28
Center beam 11
Central part 11
Crossbar 11
Declaration of conformity 37
Dimensions 33
Directive 2013/53/EG 37
Disassembling the flanges 31
Draft 34
Environmental protection 8
Further information 9
Height 34
Hull 11
 opening 31
Identification number 35, 37
Important notes 4, 9
Instruction style guide 9
Internet 9
Length 33
Model code 37
Model options 4
Motor
 important notes 6
Multi-Sport-Katamaran 4
Outboard motor 34
Payload 33
Power lines 4
Roof rack accessories 28
Safety instructions 4
Sail area 34
Setting the clamping force 29
Side beam 11
Speed 34
Standards 38
Storage
 important notes 7
Technical data 33
Trampoline 11
Transport 25
 storage 7
Videos 9
Weight 33
Width 33

Row&Sail GmbH

Gewerbezeile 9

4040 Lichtenberg/Linz

Austria

Tel.: +43 7239 20275

Fax: +43 7239 20275 30

office@rowandsail.com

www.x-cat.com

Copyright © Row&Sail GmbH 05/2023

